

DOWNSTREAM

NEWSLETTER

WASTEWATER AND RECYCLED WATER SERVICE TO COMMUNITIES WITHIN ENCINITAS, LA COSTA, AND LEUCADIA

Board of Directors

Donald Omsted, President
 Judy Hanson, Vice President
 Elaine Sullivan, Director
 David Kulchin, Director
 Allan H. Juliussen, Director
 Paul J. Bushee, General Manager

Enjoy Your Summer. We've Got Your Back!

It's summer! Time to grab your board and hit the beach, grab your binoculars and check out the birds, or just get out into the sunshine and enjoy the amazing environment that we're lucky enough to call home. Keeping our precious natural resources safe and protected while we manage the wastewater system is Leucadia Wastewater District's major focus.

You might not know that beneath the roads next to the lagoon and along the beach, there's an intricate system of pipelines, pump stations and equipment to safely convey raw sewage from homes and businesses to the Encina Wastewater Authority in Carlsbad. LWD has planned, built and

maintains these systems with a sophisticated array of dual pipes, computerized alarms, wet wells that hold sewage, backup electrical networks, a wireless notification system and more. As you'll see in this newsletter, it's a well-planned program that provides double and in some cases, triple protections that are maintained by our skilled technicians, 24/7.

Maintaining a clean environment and protecting our beaches and wetland areas is paramount to LWD's Board of Directors and staff; in fact it's written into our policies, plans and procedures. Our environmental protections go above and beyond both regulations and industry standards. While you're having fun in

the sun, our underground network is on the job, protecting the beach and lagoon for all the locals — people and animals alike.

If your group or association would like an even closer look at what's beneath the surface, we offer tours of our recycled water facility and Batiquitos Pump Station. Just call (760) 753-0155 to arrange for a tour and presentation. Have a fun, safe and enjoyable summer — we'll keep on working for you.

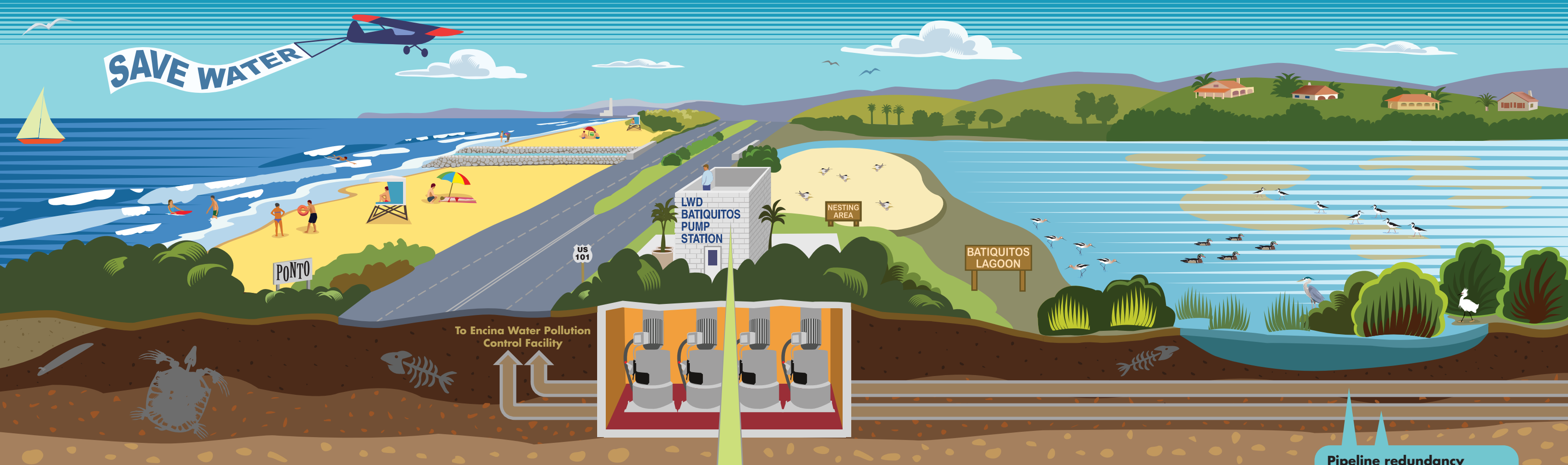
**Want to know more
about how we protect the
lagoon and beaches?**

**Attend our Public Forum
July 20 5:30 p.m.**

More info at www.lwwd.org



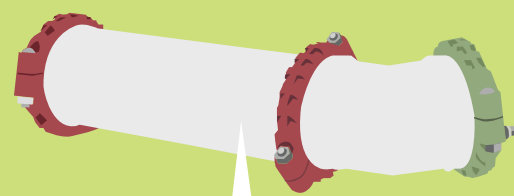
SAVE WATER



An In-depth View of Batiquitos Pump Station

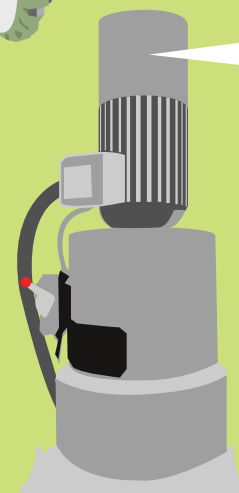
The pump station is located along the east side of Highway 101 just north of La Costa Avenue, in close proximity to the sensitive ecological areas of Batiquitos Lagoon and Ponto Beach. Mostly underground, LWD's pump station is a sophisticated, high tech system, built to transfer wastewater from the District's service area to the Encina Water Pollution Control Facility in Carlsbad. It also protects against wastewater spills and odors so that the beaches, wetlands and protected bird nesting areas remain undisturbed.

The Batiquitos Pump Station is unique in that it has been designed with many emergency backup measures to ensure that wastewater keeps flowing even in emergency situations like power outages, equipment failure or adverse weather conditions. We carefully plan so that any damage is minimized, even when unforeseen circumstances overwhelm normal operations.



Emergency Bypass System

In case of a large scale emergency during which the main pumps can not be used, a bypass system allows operators to connect a portable pump above ground so that wastewater can bypass the pump station and keep flowing to the treatment facility.

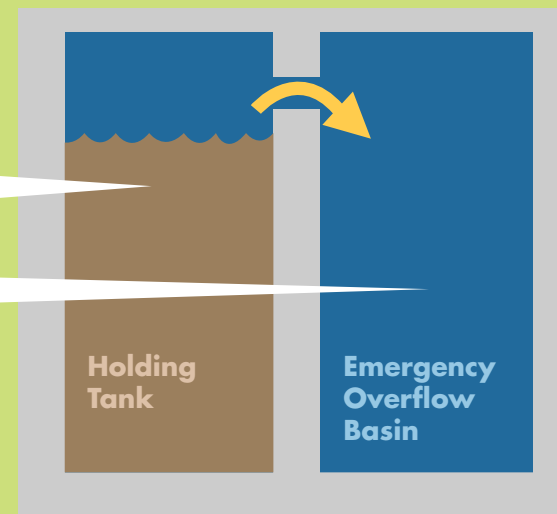


Pumps

The Batiquitos Pump Station is equipped with four powerful pumps that keep the wastewater moving to its final destination. Although two pumps are sufficient to meet most operational requirements, this redundancy provides backup so that needed repairs or maintenance can be made when pumps are out of service.

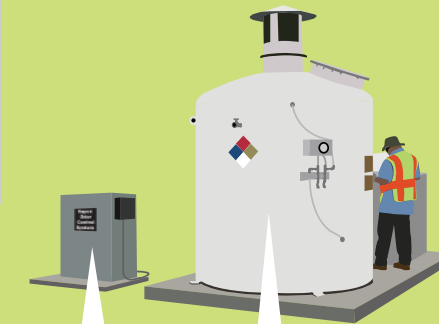
Emergency Overflow Basin

Incoming sewage flows into the pump station and is stored in a large holding tank until pumps can move it to the water pollution control facility. In the event of an emergency that prevents the pumps from operating, an emergency overflow basin is located underground next to the holding tank. This basin captures any wastewater that may overflow from the holding tank when it is full. The emergency overflow basin prevents spills into the nearby lagoon by allowing extra time for the crew to respond.



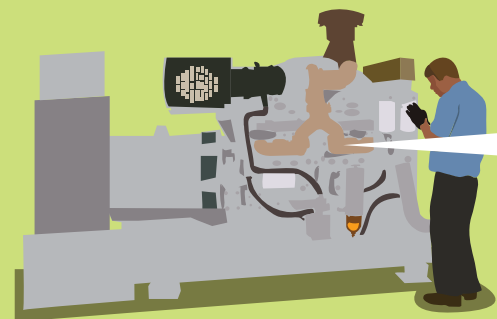
Pipeline redundancy

In sensitive areas (such as around the lagoon and beaches), and in areas where access to the pipes may be limited, LWD has installed two main pipelines, so that the flow may be redirected in case of a leak or necessary repairs. The pipelines provide critical redundancy to ensure that wastewater continues to flow in any situation.



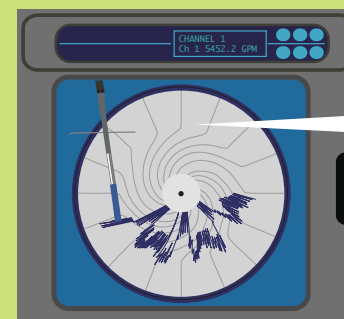
Odor Controls

Carbon scrubbers and VAPEX products control hydrogen sulfites, which cause odors. These enhancements allow beachgoers and lagoon patrons to enjoy the local area without offending odors.



Emergency Standby Generator

If power is interrupted or goes out completely, an automatic transfer switch engages the standby emergency generator to provide critical backup electricity to the pump station until main power is restored.



Sophisticated Electronics

The Batiquitos Pump Station is equipped with state-of-the-art electronics that constantly monitor the level and flow of wastewater through the system. The pump station electronics allow field service crews to constantly monitor equipment and to respond quickly when electronic warnings are received.

LWD Employee Receives Prestigious Award



Ian Riffel was recently selected as the California Water Environment Association's (CWEA) San Diego Chapter's Collection System Person of the Year. Competing against wastewater professionals in seven sections from San Diego County, Ian impressed the selection panel with his educational accomplishments and extensive training. During his short professional career at LWD, Ian has obtained seven operator certifications while completing his B.A. and M.A. degrees.

Competing at the state CWEA competition, Ian placed second in the Collection System Person of the Year competition, against 17 state-level sections. As noted by Paul Bushee, the District's General Manager, "This outstanding accomplishment is a positive reflection on Ian and the entire LWD team. We are all very proud of Ian and happy that he is a part of LWD."



Printed on FSC recycled paper
with soy-based ink

Prefer Email?

Contact us at info@lwwd.org to start receiving electronic editions of the biannual newsletter and occasional Leucadia Wastewater District updates.

Local Schools Grow their Water Awareness

As a part of its innovative Teacher Grant program, LWD recently awarded local elementary school programs nearly \$4,000 for the 2010/11 school year.

Teachers are encouraged to apply for funding that will help build projects related to sustainable practices with water recycling, water management or wastewater and that broaden students' understanding of water's importance. Open to all elementary, junior high and high schools within the District, LWD has awarded nearly \$10,000 in grants since the program's start in 2008, reaching over 5,700 local students.

This year's winners include educators Jodi Greenberger and Diane Denato from El Camino Creek Elementary; Laura Peña and Cori Grasley at Park Dale Lane Elementary; and Thomas Baugh and Cher Lally-Deering from Olivenhain Pioneer Elementary. The grant-funded projects include gardens and hydroponic growing systems; a program to provide reusable water bottles for students; and a campaign to sell popcorn to earn money to fund UNICEF water projects providing clean water to communities in need across the globe. Students learn about water management, nutrition and healthy living and gain an appreciation for the ready availability of clean, safe water in their communities.

These invaluable lessons are teaching our youth practices that will be needed for living in a healthy environment that will be their future. Congratulations to the dedicated and hard-working teachers who are teaching kids these important lessons.



Park Dale Lane Elementary School's new garden, funded in part by LWD's Teacher Grant. Low-water growing systems and use of reclaimed materials help teach students about sustainability.